



Kenworth W900 & T800 1995—2008

Part number **7825**

ROADMASTER your source for quality truck accessories

Page 1 of 2

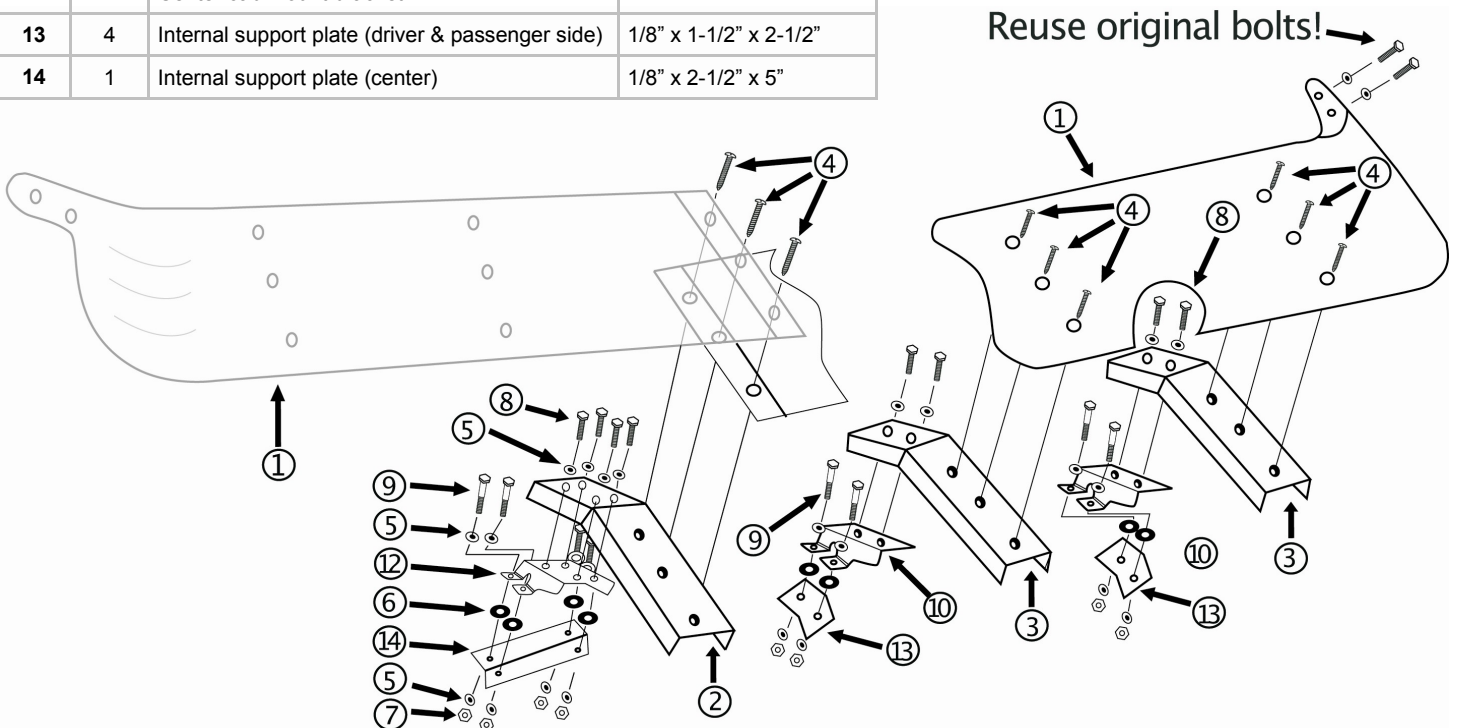
Important! Read entire 2 page instructions before beginning

Contents

Items you will need

Item	Qty	Description	Size
1	2	Visor body halves	13" x 35"
2	1	Center visor	11-3/4" x 2-3/8"
3	4	Outer visor brackets	11-3/4" x 1-7/8"
4	15	Truss head machine screws	1/4-20 x 1/2"
5	36	Washers	1/4-20
6	12	Rubber welnuts	1/4-20
7	12	Lock nut	1/4-20
8	12	Hex head bolt	1/4-20 x 3/4"
9	12	Hex head bolt	1/4-20 x 1/2"
10	2	Driver side cab mount brackets	3-3/4" x 2-1/2"
11	2	Passenger side cab mount brackets	3-3/4" x 2-1/2"
12	1	Center cab mount bracket	4-1/2" x 4-1/2"
13	4	Internal support plate (driver & passenger side)	1/8" x 1-1/2" x 2-1/2"
14	1	Internal support plate (center)	1/8" x 2-1/2" x 5"

Safety glasses
Grinder
Silicone or Loctite
Center punch
Drill Motor
10mm Metric wrench
7/16" Wrench
Phillips head screw drive
Marking pen
5/16" Drill bit

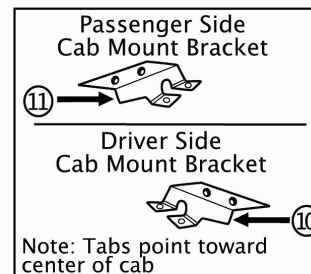
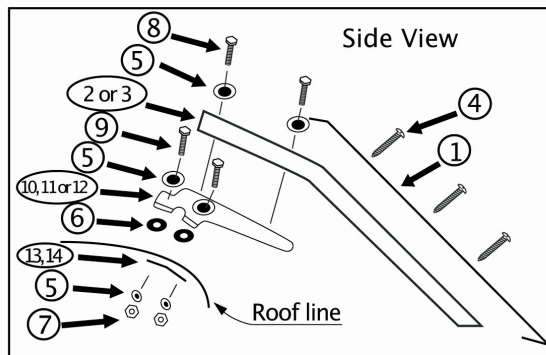


13813 S. Main Street, Los Angeles CA 90061 " (310) 767.5900 " fax (310) 767.5901

www.thinkroadmaster.com



Important! Read entire 2 page instructions before beginning



Steps:

1. Remove your current visor:
Note: You will need to reuse the bolts which go into the side of the cab at the ends of the visor.
2. Grind off the heads of the Huck bolts.
 - a. Hold the existing brackets in place and take your time grinding Huck heads off. If you grind too fast or hard it will melt the paint around the head. It is recommended that you only grind a little bit at a time.
3. Remove Headliner and roof consol. With one person holding the backing plates (Item #s 13 & 14) attach the exterior brackets to the cab. "Finger tightens" only. Note: Passenger side and driver side outer bracket tabs point toward the center.
4. Install the drivers side portion (Item 1) first.
 - a. Screw in, a couple turns the "Side of cab bolts" through holes in the end of the visor.
 - b. Start the machine screws into the brackets to "finger tightening" the brackets into position.
5. Repeat Step 4 with the passenger side.
6. Align the visor by snugly tightening one of the screws in each mounting bracket. Start from the outside of the cab and work toward the middle, one machine screw per bracket at a time
7. Install the drivers side portion (Item 1) of the visor first.
 - a. Screw in a couple of turns the "side of cab bolts" through the holes in the end of the visor.
 - b. Start the machine screws into the outside bracket to temporarily hold it in position.
8. With one person holding the visor in place, the other person will check alignment. When the brackets are in position use them as templates. Mark the new mounting hole with a permanent marker.
9. Remove the visor.
10. Center punch where the holes are to be drilled and drill 5/16" holes.
11. Install brackets per step three (3).
12. Remove the PVC coating from the visor.
13. Once the visor is in alignment, tighten the machine screws with the Nylon lock nuts.
14. Tighten all remaining bolts and machine screws following steps 4-6. We recommend that you use silicone or Loctite® on each of the screws to prevent loosening from over the road use.